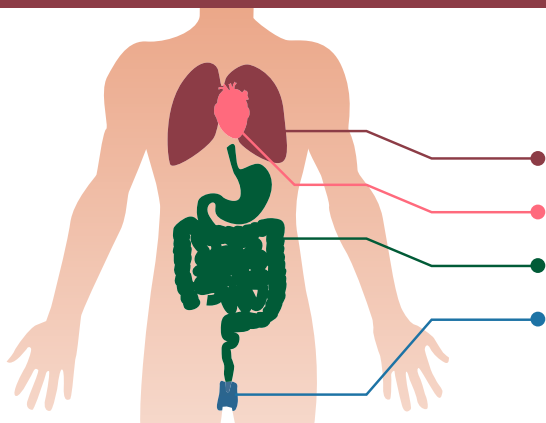


MESOTHELIOMA KE ENG?

GLYNNIS GALE
FOUNDATION



Mesothelioma ke kankere e e ka amang...

LETSADI LA MAKGWAFO

PELO

MPA

MARETE

Mehuta e 4 ya mesothelioma ke...

magareng ga
85-90%
ya dikgetsi

PLEURAL

E tsholega mo
letsading la
makgwafo

20%

PERITONEAL

E tsholega mo
letsading la mpa

1%

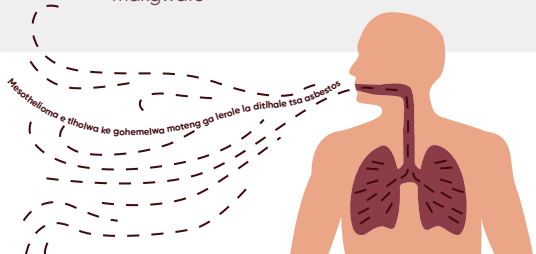
PERICARDIAL

E gola mo
letsading la pelo

1%

TESTICULAR

E tsholega mo
letsading la
marete



Matshwao a mesothelioma ya makgwafo: Gofelelwa ke mowa; ditlhabi mo sifubeng; go gothola; gofufulelwa; go latlhegelwa ke keletso ya dijo; go latlhegelwa ke mmele; letsapa le goitsemeletsa.

Matshwao a mesothelioma ya mpa: Ditlhabi mompeng; go ruruga mpa; gongakiwa; letshololo; go ekutiwa okare walwala kgotsa go lwala; go latlhegelwa ke keletso ya dijo.

90% yaditshwaetso tsa mesothelioma di golagane ka tlhamalalo le go nna mokotsing ya asbestos

Go ka nna ga diragala ka gona mokotsing mo tikologong kgotsa ko tirong. Sekai e ka nna ditiro tse di latelang: meepo; kago; diporo; industrial le dikhemikale tse di farologaneng; go aga kgotsa go bakanya dikepe.



Matshwao a mesothelioma a ka tsaya dingwaga tse **20-50** go tshagelela morago ga go angwa ke asbestos



Ikgologane le rona gompieno >> 053 285 0670

Boitlhaloso: nna onse o bonana le ngaka yagaga mabapi le sengwe le sengwe se se amang boitekanelo jwagago. Kitso e e ikaletswe gonna kitiso kakaretso ya sethogo mme ga ya tshwanela go bonala jaka kemedi ya kgakololo ya bongaka, mokao kgotsa matlale. O tswanetse o bone kgakololo e ikemetseng, e tswanelang maemo a gago a kgethegileng goiswa go batlanape ba ba malaba... Re tsaya matsapa otlhe go mtehasa ha kitso e e siame ka nako ya kgatiso