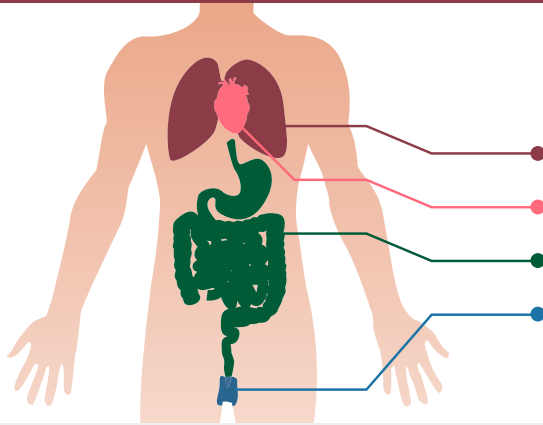


YINTONI I-MESOTHELIOMA?

GLYNNIS GALE
FOUNDATION



i-Mesothelioma ngumhlaza onochaphazela...

UMGCA WEMIPHUNGA

INTLIZIYO

ISISU

AMASENDE

Intlobo ezi 4 ze-mesothelioma yi...

pha ko
85-90%
ya matyala

PLEURAL

Iqala kumgca wemiphunga

20%

PERITONEAL

Iqala kumgca wesisu

1%

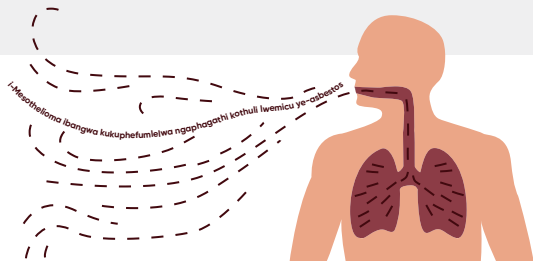
PERICARDIAL

Ikhula kumgca wentliziyo

1%

TESTICULAR

Iqala kumgca wamasende



Impawo ze-mesothelioma ye pleural: Ukuphelelwa ngumphefumlo; intlungu esifubeni; ukukhohlela; ukubila; ukulahlekela ngumda wokutya; ukuncipha komzimba; ukudinwa nokutyhafa.

Impawo se-mesothelioma ye peritoneal: Intlungu esuswini; ukudumba kwesisu; ukuqunjelwa; urhudo; ukuziva okanye ukugula; ukuphelelwa ngumda wokutya.

i-90% yemeko ze-mesothelioma zidibene ngqo nokuvezwa kwi asbestos



Impawo ze-mesothelioma zinokuthatha iminyaka engama **20-50** ukuvela emva kokuvezwa kwi-asbestos

Ungaba sesichengeni ngenxa yokusingqongileyo okanye ngenxa yempangelo. Imizkelo yemisebenzi ingaba yenye yezilandelayo: imigodi; ulwakiwo; indlela zika loliwe; imizi-mvezo nezinye ikhemikhali zethu; ukwakha nokulungiswa kwenqanawa.



Xhumana nathi namhlanje >> 053 285 0670

Ukuziphendulela: soloko ubonana nogcirha wakho malunga nemiba echaphazela impilo yakho. Olu hvazi lujoliswe njengentshayelelo jikelele ngokubanzi kwisithoko kwaye akufuneki ukuba ibonwe njen- gento ekhathe indawo ye-asebestos zonyango, zomihlolo okanye zemali. Kuya kufuneka ukuba ufumane iingcebiso ezizimeleyo ezifanele imeko yakho kwingcali ezifanelekileyo... Kuthathwa yonke inkathalo ukujinisekisa ukuba ulwazi olu luhambile ngesha lopapasho.